

User's Manual

Wi-Fi SD Firmware Update Tool

(Win/Mac version 1.0)



Device Requirements

1. Transcend Wi-Fi SD card
2. Compatible SDHC card reader*

*To offer the best compatibility, we recommend using the following Transcend card readers: RDP5, RDP7, RDP8, RDF5, and RDF8.

System Requirements

1. Windows: Windows XP/Vista/7/8 (32bit/64bit) with .Net framework** installed
Mac OS: Mac OS X 10.7 or later
2. Internet connection

**** .Net Framework Requirements**

The .Net Framework is a software framework developed by Microsoft.

- The Wi-Fi SD Firmware Update Tool requires .NET Framework 3.5. If Windows cannot find .NET Framework 3.5 on your PC, it will download and install the framework from the Internet automatically.
- Follow the wizard to complete installation.

For more information about .Net Framework 3.5:

<http://msdn.microsoft.com/en-us/library/hh506443.aspx>

Before Use

1. Updating your Wi-Fi SD card may result in data loss. Therefore, we strongly recommend you back up your data before proceeding.
2. Please update one card at a time.
3. Before executing the program, remove all USB storage devices from your computer.
4. Do not unplug the card or close the program during updating firmware unless instructed to do so.

Step by Step Instructions in Windows

1. Insert the Wi-Fi SD card into the SDHC card reader and insert the reader into an empty USB port on your computer. The computer must have an Internet connection.
2. Double click on the file WFSD_FirmwareUpdateTool_Vx.x.exe and then click **Update**.



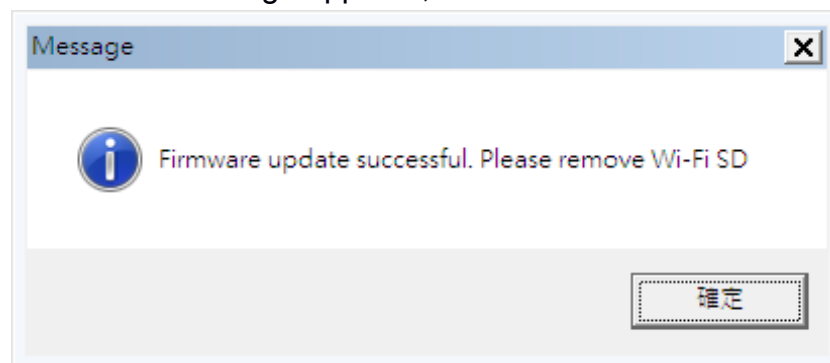
3. When all files have finished downloading, unplug and reinsert the Wi-Fi SD card.



4. The Firmware Update Tool will automatically resume. Please wait for the update to finish.
5. After the firmware update has completed 100%, unplug and reinsert the Wi-Fi SD card and wait for tool to check update status.



6. When the success message appears, remove the Wi-Fi SD card.

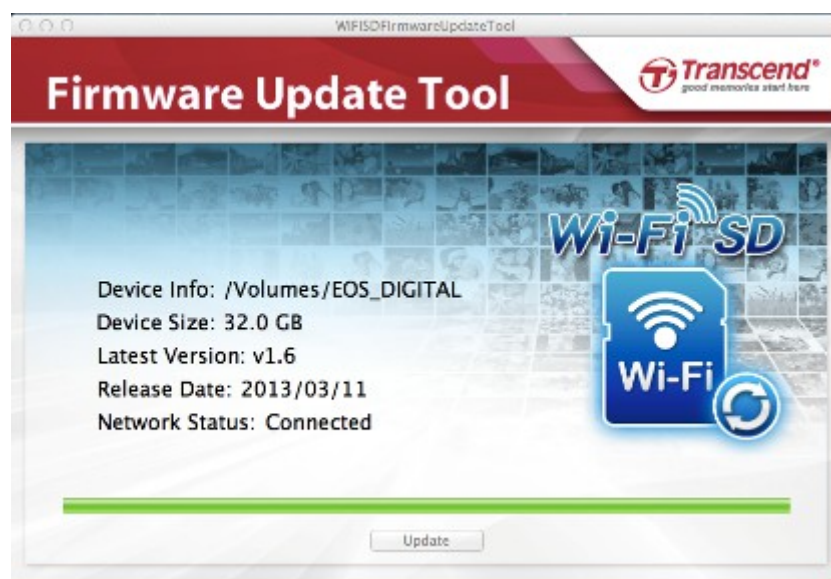


Step by Step Instructions in Mac OS

1. Insert the Wi-Fi SD card into the SDHC card reader and insert the reader into an empty USB port on your Mac. The Mac must have an Internet connection.
2. Double click on the file WiFiSDFirmwareUpdateTool and then click **Update**.



3. When all files have finished downloading, unplug and reinsert the Wi-Fi SD card.



4. The Firmware Update Tool will automatically resume. Please wait for the update to finish.



5. After the firmware update has completed 100%, unplug and reinsert the Wi-Fi SD card and wait for tool to check update status.



6. When the success message appears, remove the Wi-Fi SD card.

